


- Dry ceramic sensor
- Ranges from 40 mbar to 250 bar
- Accuracy  $\leq 0,2\%$
- High overload capability
- Analog output: 4...20 mA, 2-wire  
0...10 V, 3-wire
-  I M2 EEx ia I  
II 1G EEx ia IIC T4/T6  
BVS 03 ATEX E 222



## Pressure Transmitter P 121

### Technical data:

Range:	0...40 mbar to 0...250 bar
Output signal:	4...20 mA, 2-wire, 0...10V 3-wire
Accuracy:	$\leq \pm 0,2\%$ FS @ 25°C
Response time:	200 ms (other available on request)
Supply voltage:	9...32V DC, 20 mA output 15...30V DC, 10 V output (12...30V Ex-version)
Ambient temperature:	-25...80 °C (-20...80 °C at EEx ia IIC T4) (-20...50 °C at EEx ia IIC T6)
Process temperature:	-40...100 °C (125 °C < 0,5h) (-20...80 °C at EEx ia IIC T4) (-20...50 °C at EEx ia IIC T6)
Temperature coeff.:	$\leq \pm 0,015\%$ FS/K (zero) $\leq \pm 0,01\%$ FS/K (span)
Long term stability:	$\leq \pm 0,15\%$ FS p. a.
Housing:	stainless steel, 1.4404
Sensor:	ceramic AL <sub>2</sub> O <sub>3</sub>
Electrical connection:	connector EN 175301-803A, IP65 cable 2m/5m, IP 67

**Nöding**

Meßtechnik

## Ranges

range	gauge	absolut	overload (bar)
0...40 mbar*	A8		- 0,3 / 4
0...50 mbar*	B0		- 0,3 / 4
0...60 mbar*	A9		- 0,3 / 4
0...100 mbar	00		- 0,3 / 4
0...160 mbar	01		- 0,6 / 5
0...200 mbar	B1	B2	- 1 / 6
0...250 mbar	02		- 1 / 6
0...0,4 bar	03	28	- 1 / 6
0...0,5 bar	B7		- 1 / 6
0...0,6 bar	04		- 1 / 10
0...1 bar	05	30	- 1 / 10
0...1,6 bar	06	31	- 1 / 18
0...2 bar	B3	B4	- 1 / 18
0...2,5 bar	07	32	- 1 / 18
0...4 bar	08	33	- 1 / 25
0...5 bar	F1	F2	- 1 / 40
0...6 bar	09	34	- 1 / 40
0...10 bar	10	35	- 1 / 40
0...16 bar	11	36	- 1 / 40
0...20 bar	B5	B6	- 1 / 40
0...25 bar	12	37	- 1 / 40
0...40 bar	13	38	- 1 / 60
0...50 bar	F3	F4	- 1 / 100
0...60 bar	14	39	- 1 / 100
0...100 bar*	15	40	- 1 / 250
0...160 bar*	16	41	- 1 / 400
0...250 bar*	17	42	- 1 / 600
-100...0 mbar	C4		- 0,3 / 4
-100...100 mbar	C5		- 1 / 6
-200...0 mbar	D2		- 1 / 6
-200...200 mbar	D3		- 1 / 6
-1...1 bar	D6		- 1 / 10
-1...3 bar	D8		- 1 / 25
-1...5 bar	D9		- 1 / 40
-1...9 bar	E1		- 1 / 40
-1...15 bar	E2		- 1 / 40
0,8...1,2 bar		B9	- 1 / 10

\* Global error 0,5% F.S.

## Ordering code

### Output signal

- 1 0...10V 3-wire
- 4 4...20 mA 2-wire
- H 4...20 mA 2-wire Hightemp -25°C...120°C
- E 4...20 mA 2-wire  $\text{Ex}$  II 1G EEx ia IIC T4/T6
- M 4...20 mA 2-wire  $\text{Ex}$  I M2 EEx ia I

### Range

- Measurement range see table
- 99 non-standard range (on request)

### Process connection and material

- 2 1/2 - 14 NPT, 1.4404
- D G 1/4 A DIN 3852 1.4404
- DN 1/4 - 18 NPT, 1.4404
- 3 G 1/2 A DIN 16288 1.4404
- G G 1/2 A and 11,8 mm drill hole, 1.4404
- 4 G 1/2 A and G 1/4 female, 1.4404
- 9 others (on request)

### Sensor seal

- 1 FPM (Viton) Standard
- 2 NBR (Nitril)
- 3 EPDM
- 4 Fluor-Silicon
- 5 Chemraz 505
- 9 others (on request)

### Electrical connection

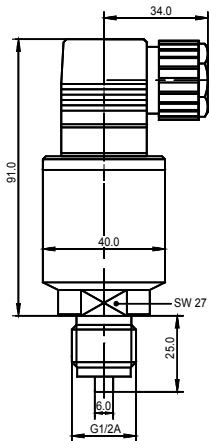
- 1 connector EN 175301-803A, IP 65
- 4 connector EN 175301-803A, IP 65, potted electronic
- A Connector M12x1
- B Connector M12x1, potted electronic
- F Quickon Connector
- G Quickon Connector, potted electronic
- 0 5m cable, IP 67
- 5 5m cable, IP 67, potted electronic
- 6 2m cable, IP 67,
- 7 2m cable, IP 67, potted electronic
- 8 6 pin Mil connector

### Options

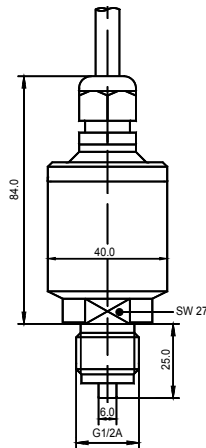
- R Ceramic sensor 99,9% Al<sub>2</sub>O<sub>3</sub>
- T Minimized case volume
- RT Ceramic sensor 99,9% Al<sub>2</sub>O<sub>3</sub> with minimized case volume

P121 - 

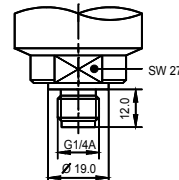
## Dimensions (mm)



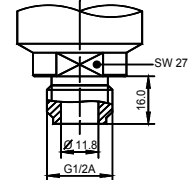
G 1/2 A DIN 16288



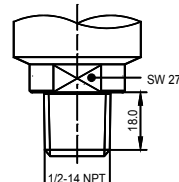
G 1/2 A DIN 16288



G 1/4 A



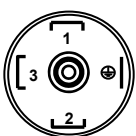
G 1/2 A



1/2-14 NPT

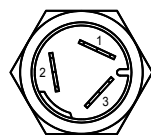
## Electrical connections

### Connector EN 175301-803A



- 4...20 mA 2-wires
- PIN1 Signal +
- PIN2 Signal -
- 0...10V 3-wires
- PIN1 in +
- PIN2 in -
- PIN3 out +

### Quickon-Connector



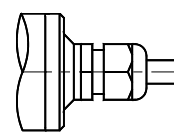
- 4...20 mA 2-wires
- PIN1 Signal +
- PIN2 Signal -
- 0...10V 3-wires
- PIN1 in +
- PIN2 in -
- PIN3 out +

### M12x1, 4-pin Connector



- 4...20 mA 2-wires
- PIN1 Signal +
- PIN3 Signal -
- 0...10V 3-wires
- PIN1 in +
- PIN3 in -
- PIN4 out +

### Cable connection



- 4...20 mA 2-wires
- red Signal +
- black Signal -
- 0...10V 3-wires
- red in +
- black in -
- white out +

Modifications reserved without notice, 11.11